

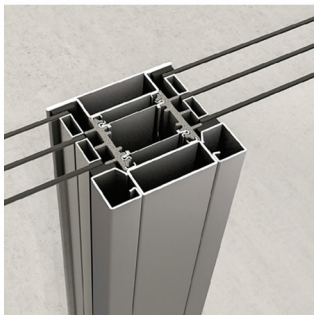


## MAIN FEATURES:

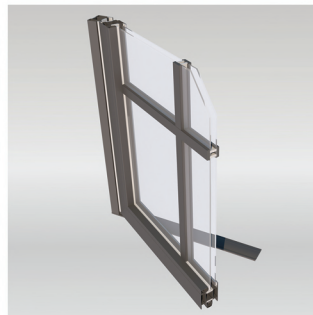
- maintenance-free durability, security, and aesthetic appeal.
- elegance, precision manufacturing, and impeccable performance.
- extraordinary slinness.
- the unit profiles are made of 100% recyclable steel and contain no synthetic insulating materials.
- maximum transparency, a sleek appearance.

## TECHNICAL INFORMATION:

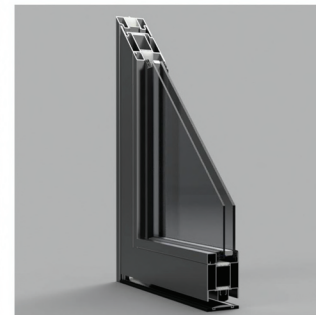
- Sound insulation values up to  $R_w = 47$  dB
- Burglary-resistance from RC1 – 3.
- Bulletproof from FB1 - FB4.
- Welded corners, which provides a greater and stronger connection to reduce corrosion.
- Thermal Break
- NFRC Certification



Impost



Tilt and Turn Window

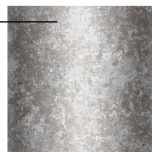


Door





SURFACES

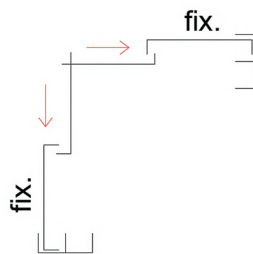
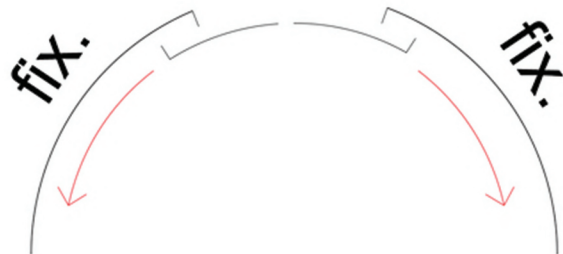


GALVANIZED STEEL

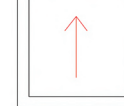
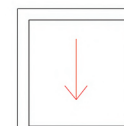
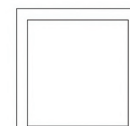
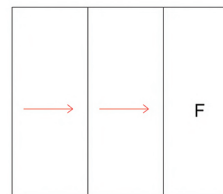
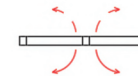
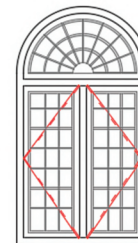
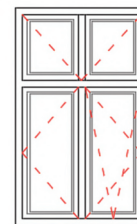
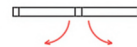
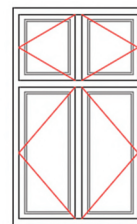
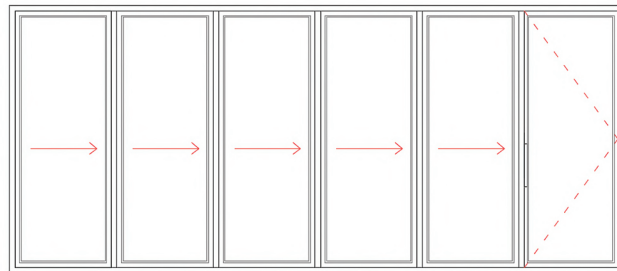


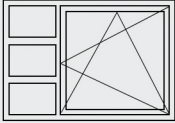
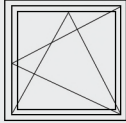
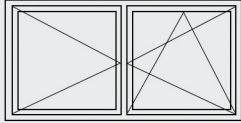
STAINLESS STEEL

Can be powder coated according to RAL or custom color



OPENING TYPES



Tested specimen	1	2	3
Figure			
Window size in mm	1341 x 1480	2538 x 1480	2376 x 2485
Characteristics	Class/Value		
Resistance to wind load EN 12210	AW 60	AW 40	AW 40
Watertightness EN 12208	12 lb/ft2	10 lb/ft2	Up to 12 lb/ft2
Air permeability EN 12207	< 0.1 ft3/m/ft2	< 0.2 ft3/m/ft2	< 0.2 ft3/m/ft2
Operating forces EN 13115	1	1	1
Mechanical strength EN 13115	4	4	4
Resistance to repeated opening and closing EN 12400	4	4	2
Impact resistance EN 13420	3	3	3
Load-bearing capacity of safety devices EN 13049	Requirement fulfilled		



New York Design Center  
123 Coffey Street, Brooklyn, NY 11231  
Office: 718.403.0300  
[info@openawd.com](mailto:info@openawd.com)  
[www.openawd.com](http://www.openawd.com)